



**THE CITY OF SAN DIEGO  
PARK AND RECREATION DEPARTMENT  
OPEN SPACE DIVISION  
PACIFIC HIGHLANDS RANCH MAINTENANCE ASSESSMENT DISTRICT  
OCTOBER 2015 STAFF REPORT**

---

### **Ornamental Landscaping**

- Please let Greg know if you have suggestions on ways to improve maintenance activities within the district.
- Landscape Enhancement Projects:
  - Staff would like to renovate the first landscaped center median along Del Mar Heights Road, east of Seagrove Street. The plant palette will consist of Coleonema compacta “Breath of Heaven” and Rhipiolepis shrubs. The same plant material was used in second center median renovation on Del Mar Heights Road which was completed last fiscal year. (*See attachments*).
  - Pardee Homes/Contractors are in the process of constructing two center medians in between Rancho Sante Fe Farms Road to Via Abertura. The plant palette will match the existing Carmel Valley Road median landscapes in PHR and will consist of drought tolerant plant material with water-efficient drip irrigation and bubblers for the trees. The new target date of completion is scheduled for late December 2015 with the turnover date being in March 2016, after the 90-day plant establishment period (PEP) has expired.

### **Landscape Contract and Budget**

- Treebeard continues to provide services within budget.

### **Tree Trimming**

- West Coast Arborists continue to provide tree maintenance to all of the trees in the Pacific Highlands Ranch MAD.

**Attachments**

1. Del Mar Heights Road Plant Median Quote
2. Del Mar Heights Road Median Photo (Aerial View)

Respectfully submitted,

Greg Armstead  
Grounds Maintenance Manager  
(619) 685-1366  
[garmstead@san Diego.gov](mailto:garmstead@san Diego.gov)

cc: Paul Sirois, Assistant Deputy Director, Open Space Division  
Erika Ferreira, District Manager, Open Space Division



July 30, 2015

Bid No. 658-37

Pacific Highlands  
LANDSCAPE PROPOSAL  
Revised 08-26-2015

LOCATION: Del Mar Heights between Valero Gate and Seagrove St.

SCOPE OF WORK:

Provide labor, equipment and materials to remove Rose bushes and Lantana throughout the center median and replant with 258-5gal. Breath of Heaven 'Coleonema Compacta' and 85-5 gal. Rhipiolepis Pink Lady.

Cost breakdown	
258-5gal. Coleonema Compacta @ \$9.45each	\$2,438.10
85-5gal. Rhipiolepis Pink lady @ \$8.46	\$719.10
42 bags of Planting soil @ \$9.00 each	<u>\$378.00</u>
	\$3,535.20
8%tax	\$282.82
10% handling	\$353.52
Plant Material Delivery	\$170.00
10 yards of Mulch @ \$12.00 per yard	\$120.00
Mulch delivery	\$150.00
Disposal	\$125.00
Labor	
115 hrs. @ \$21.59 each	\$2,482.85

Total Cost: \$7,219.39

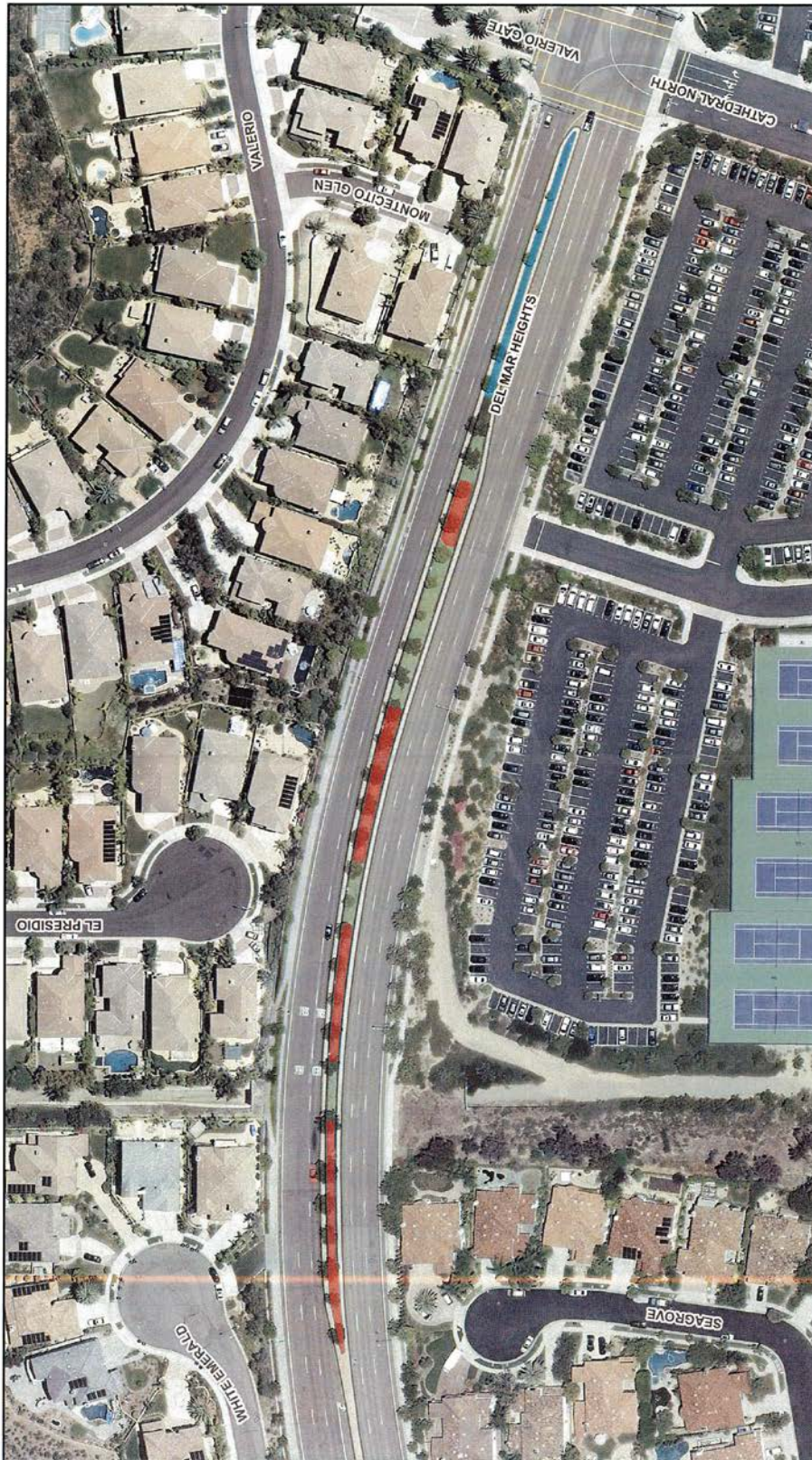
Note: Removal of shrubs is to be completed by onsite crew.

APPROVED BY: \_\_\_\_\_ DATE: \_\_\_\_\_

This proposal is valid for 45 days. Any alterations to the scope of work will be charged as an extra to the contract price. All accounts 30 days past due are subject to a 1 1/2% monthly service charge.  
info@treebeardlandscape.com

P.O. Box 2777, Spring Valley, California 91979 (619) 697-8302 Fax (619) 697-0820





### Existing Landscape/Proposed Renovation Areas

- Roses to be replaced by Coleonema "Breath of Heaven"
- Lantana to be replaced by Rhipiolepis Shrubs

