

- 1 CONCRETE PAVING
- 2 ASPHALT PAVING
- 3 STABILIZED DECOMPOSED GRANITE
- 4 SHADE STRUCTURE, TYP.
- 5 OVERLOOK WITH GAZEBO
- 6 STAGE WITH SHADE STRUCTURE
- 7 CONCRETE STAIRS
- 8 CONCRETE RAMP
- 9 PICNIC NODE WITH TRASH AND RECYCLING RECEPTACLES, TYP.
- 0 LIGHTED FULL COURT BASKETBALL, STRIPED FOR PICKLEBALL
- 1 BIORETENTION BASIN
- 2 CHILDREN'S PLAYGROUND
- 3 SPORTS FIELD LIGHT
- 4 BIKE RACK
- 5 DRINKING FOUNTAIN
- 6 DOG BAG DISPENSER
- 7 RAINWATER FEATURE
- 8 PLAY GARDEN
- 9 SOFTBALL FIELD WITH 300' FOUL LINE
- 0 FITNESS NODE, TYP.
- 1 ENTRY PLAZA
- 2 MONUMENT SIGN
- 3 CHAINLINK FENCE, 5 FT
- 4 INTEGRAL COLOR CONCRETE WALL

ENTRY AND ACCENT PLANTING

LOW WATER USE/
PERIMETER PLANTING

BASIN PLANTING

TURF

EXISTING TREE TO REMAIN

LANDSCAPE SHADE TREES

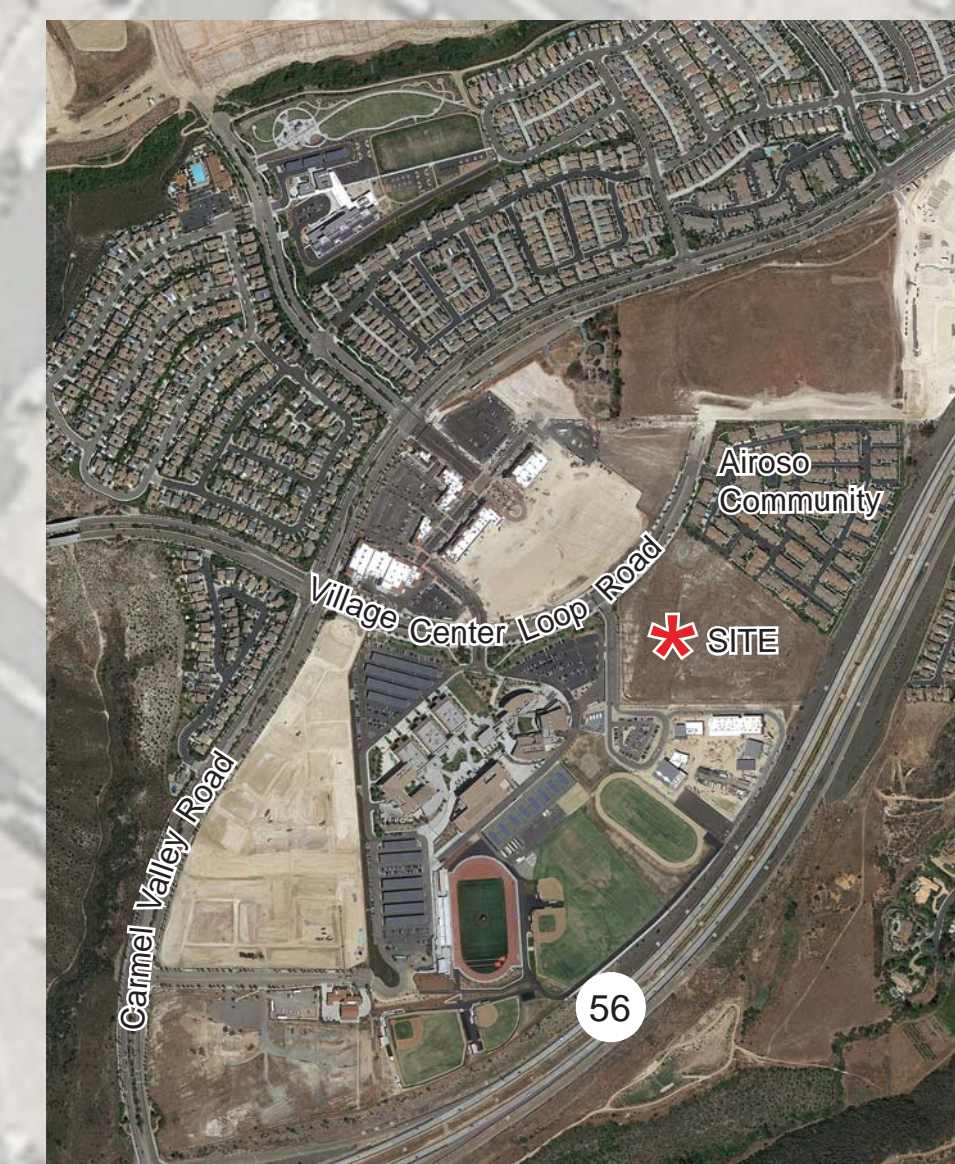
PROMENADE TREES

BASIN TREES

LOT 30

FUTURE LIBRARY

THE PARK IS DESIGNED TO FACILITATE COMMUNITY GATHERING, ENCOURAGE SOCIAL INTERACTION, AND OFFER THE COMMUNITY WITH A DIVERSE AND UNIQUE BLEND OF RECREATIONAL AMENITIES. THE CENTRAL PROMENADE FUNCTIONS AS AN EXTENSION OF THE VILLAGE CENTER AND DRAWS VISITORS INTO THE PARK. AN ENTRY GARDEN, DISCOVERY PLAY GARDEN, PARKOUR AREA, CHILDREN'S PLAY AREAS, AND INFORMAL TURF PICNIC AREA OFFER A WIDE VARIETY OF RECREATIONAL OPPORTUNITIES ARE DEFINED BY THE PROMENADE IN THE HEART OF THE PARK. A 17,000 S.F. RECREATION BUILDING IS LOCATED ON THE SOUTHWESTERN EDGE OF THE CENTRAL PROMENADE OFFERING OPPORTUNITIES FOR ATHLETIC AND COMMUNITY-BASED FUNCTIONS IN THE CENTRAL GYMNASIUM, A SEPARATE MULTI-PURPOSE BUILDING, AND A LARGE, FLEXIBLE OUTDOOR COURTYARD. THE PROMENADE OPENS TO 5 ACRE MULTI-PURPOSE TURF FIELD WHICH IS ANCHORED ON THE NORTH BY A SIGNATURE SHADE STRUCTURE AND STAGE, AND A FULL SIZE SOFTBALL FIELD ON THE SOUTH. A 0.6 MILE LOOP PATHWAY CONNECTS THE AMENITIES AROUND THE FIELD AND CONNECTS THE A DOG PARK AND PUMP TRACK ON THE SOUTHERN EDGE OF THE PARK SITE. THE PARK EMBRACES THE WALKABLE NATURE OF THE COMMUNITY AND UTILIZES JOINT-USE PARKING AT THE ADJACENT SCHOOL SITES TO MINIMIZE THE NEED FOR ON-SITE PARKING.



VICINITY MAP

EXISTING FENCE
TO REMAIN

AIROSO COMMUNITY

MULTI PURPOSE
TURF FIELD

REC CENTER

PARKOUR

Turf

LARGE DC
PARK

SMALL DOG
PARK

10

56

PACIFIC TRAILS MIDDLE SCHOOL

GENERAL DEVELOPMENT PLAN

PHR COMMUNITY PARK

2016.01.14